

# Freestanding Warehouse for Lease

With Office + Vacant Land

## 4095 Deeble St, Sacramento, CA 95820



**±3,840 SF**

**Rent: \$1.00 SF + NNN**

Freestanding commercial/warehouse building measuring approximately +/- 3,840 rentable square feet, together with gated yard space located at a portion of 4045 and 4095 Deeble Street, Sacramento CA. The Project contains approximately +/- 5,140 square feet of buildings.

### FOR MORE INFORMATION CONTACT:

**Antonia Giaouris**, Executive Director of Leasing

Antonia.Giaouris@Clire.com | (916) 457 - 9900 x 6 | [www.clire.com](http://www.clire.com)



**4095 Deeble St, Sacramento, CA 95820**

## FEATURES

- Cinderblock building
- 200 amp electrical panel
- City of Sacramento Utilities
- 10' high ceilings inside
- 2 existing roll up doors + knockout for 1 more
- Conditioned office
- Parking
- Yard space
- Corner lot

LEASE TYPE:	NNN
-------------	-----

ROLL UP DOORS:	2
----------------	---

ZONING:	C2 & C4
---------	---------

RESTROOMS:	1
------------	---

ENTRANCES:	2
------------	---

INFORMATION HEREIN DEEMED RELIABLE BUT NOT GUARANTEED.

**FOR MORE INFORMATION, CONTACT:** Antonia Giaouris | Executive Director of Leasing  
Antonia.Giaouris@clire.com | 916.457.9900 x 6 | 3801 W. Pacific Ave, Suite A, Sacramento, CA 95820





# 4095 Deeble St, Sacramento, CA 95820



Disclaimer: Personal property stored in in the warehouse belongs to the landlord and will be removed prior to transfer of possession to new tenant

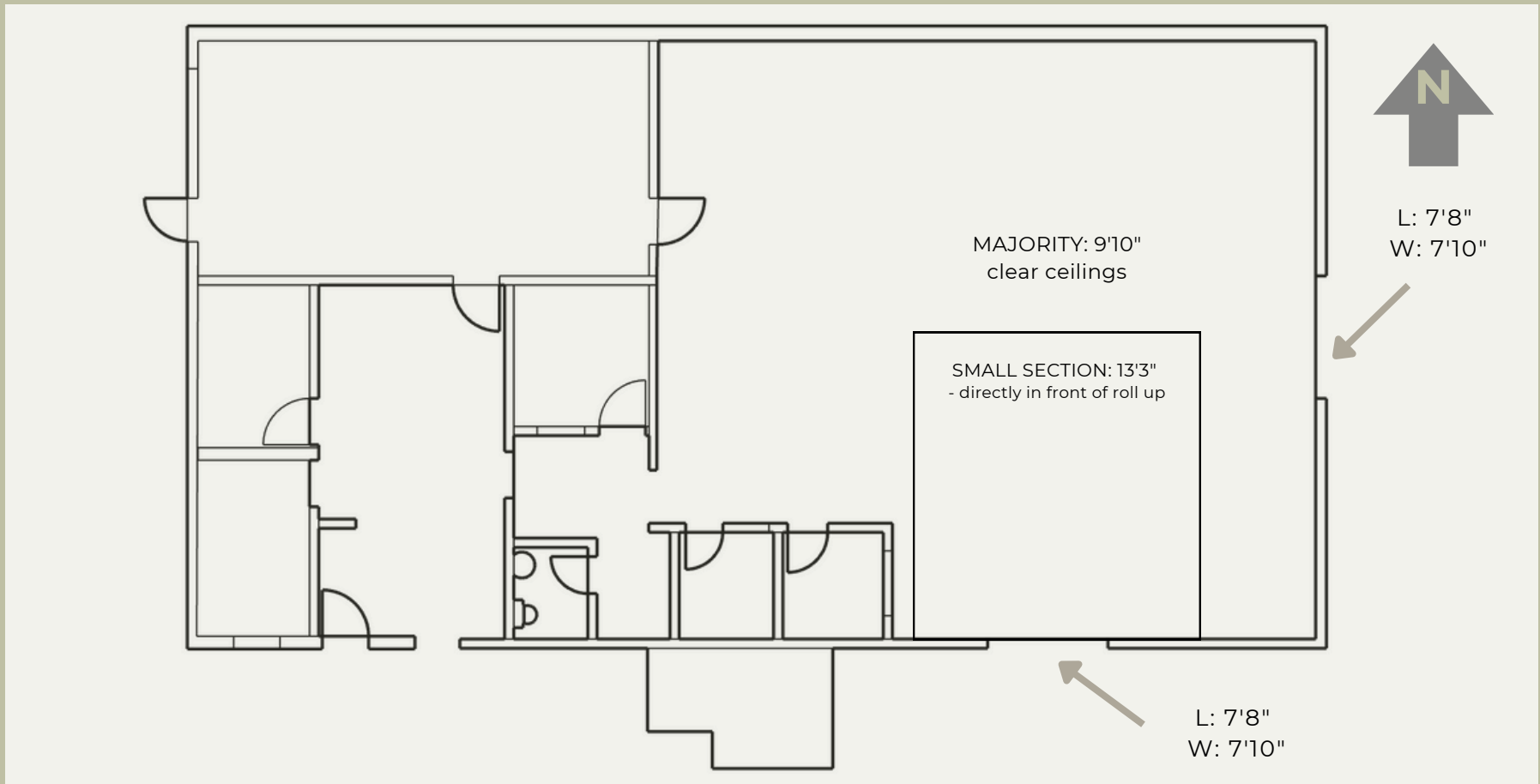
INFORMATION HEREIN DEEMED RELIABLE BUT NOT GUARANTEED.

**FOR MORE INFORMATION, CONTACT:** Antonia Giaouris | Executive Director of Leasing  
Antonia.Giaouris@clire.com | 916.457.9900 x 6 | 3801 W. Pacific Ave, Suite A, Sacramento, CA 95820



**4095 Deeble St, Sacramento, CA 95820**

## FLOOR PLAN



\*ALL MEASUREMENTS ARE APPROXIMATE AND NOT NECESSARILY TO SCALE.

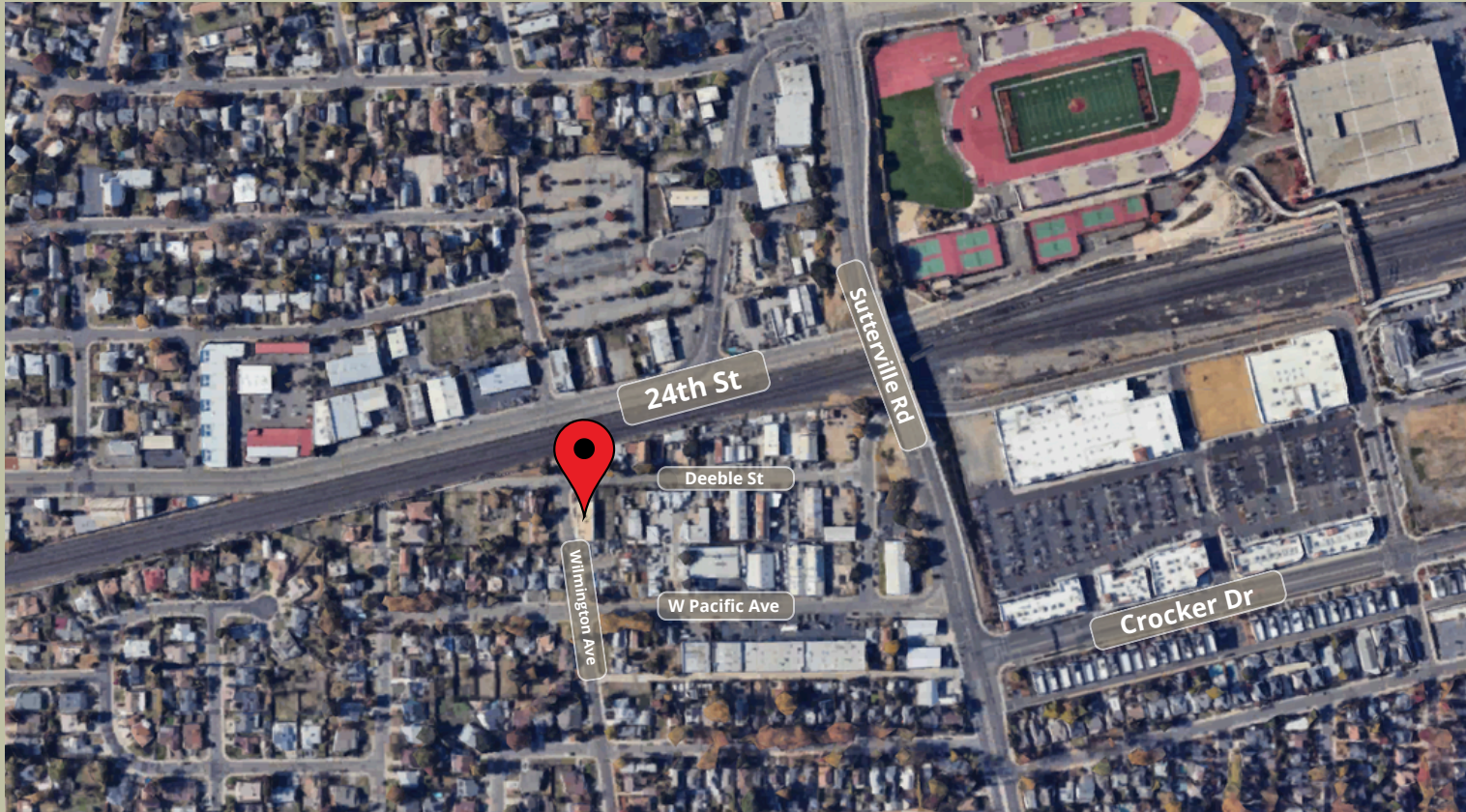
INFORMATION HEREIN DEEMED RELIABLE BUT NOT GUARANTEED.

**FOR MORE INFORMATION, CONTACT:** Antonia Giaouris | Executive Director of Leasing  
Antonia.Giaouris@clire.com | 916.457.9900 x 6 | 3801 W. Pacific Ave, Suite A, Sacramento, CA 95820





# 4095 Deeble St, Sacramento, CA 95820



I-5

Hwy 50

Hwy 99



## FOR MORE INFORMATION:

Antonia Giaouris  
Executive Director of Leasing

916.457.9900 x 6

[Antonia.Giaouris@clire.com](mailto:Antonia.Giaouris@clire.com)





**±3,840SF WAREHOUSE**

**4095 DEEBLE ST**

**SACRAMENTO, CA 95864**

**AVAILABLE FOR LEASE NOW!**

**FOR MORE INFORMATION CONTACT:**

**Antonia Giaouris**, Executive Director of Leasing

Antonia.Giaouris@Clire.com | (916) 457 - 9900 x 6 | [www.clire.com](http://www.clire.com)

