

±3,670 SF ENDCAP ANCHOR SPACE

4211 Arden Way, Sacramento, CA

Available For Lease



ANTONIA GIAOURIS

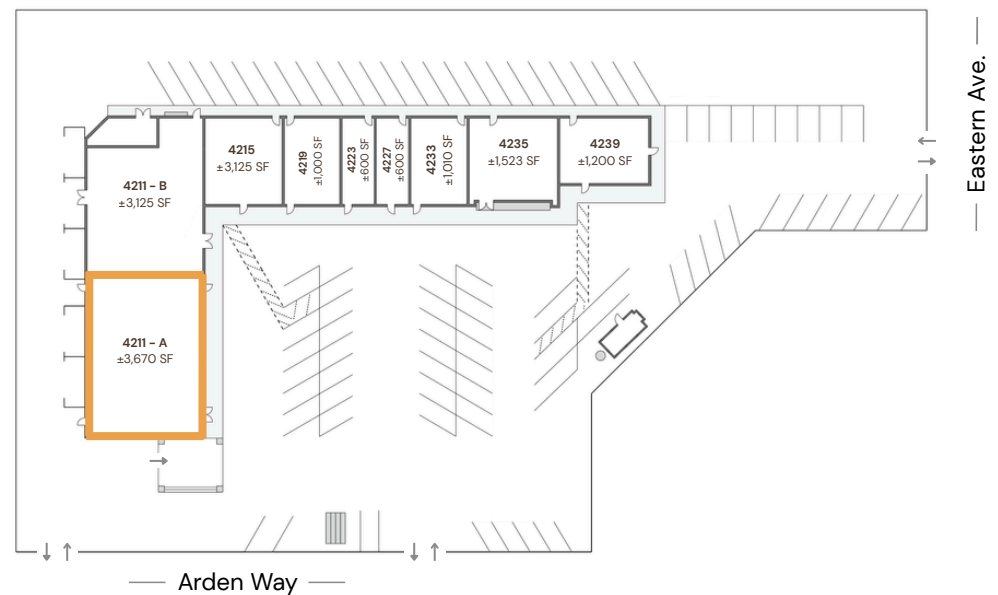
Executive Director of Leasing

Antonia.Giaouris@Clire.com | (916) 457 - 9900 x 6

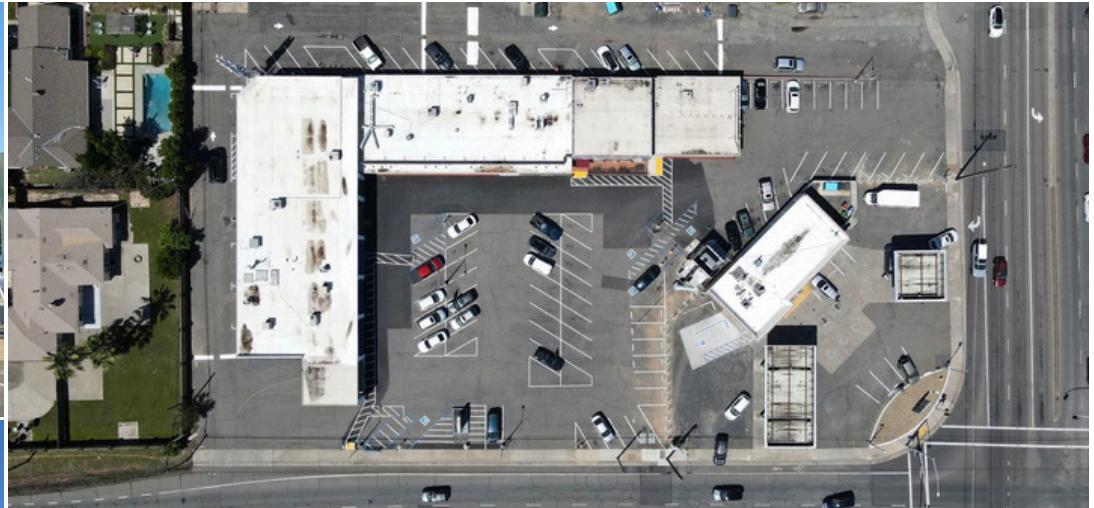


PROPERTY HIGHLIGHTS

- Zoned: SC - Shopping center
- Located on the high traffic corner of Arden way and Eastern avenue
- Monument signage, strong street visibility.
- Close to I-80, HWY 50 and HWY 160
- Ample parking, including tenant and employee parking behind the building block
- Parking Ratio: 5.9:1000 (80 regular, 5 ADA)
- 1.75 AC lot | 14,455 SF gross leasable area



PROPERTY PHOTOS



LOCATION



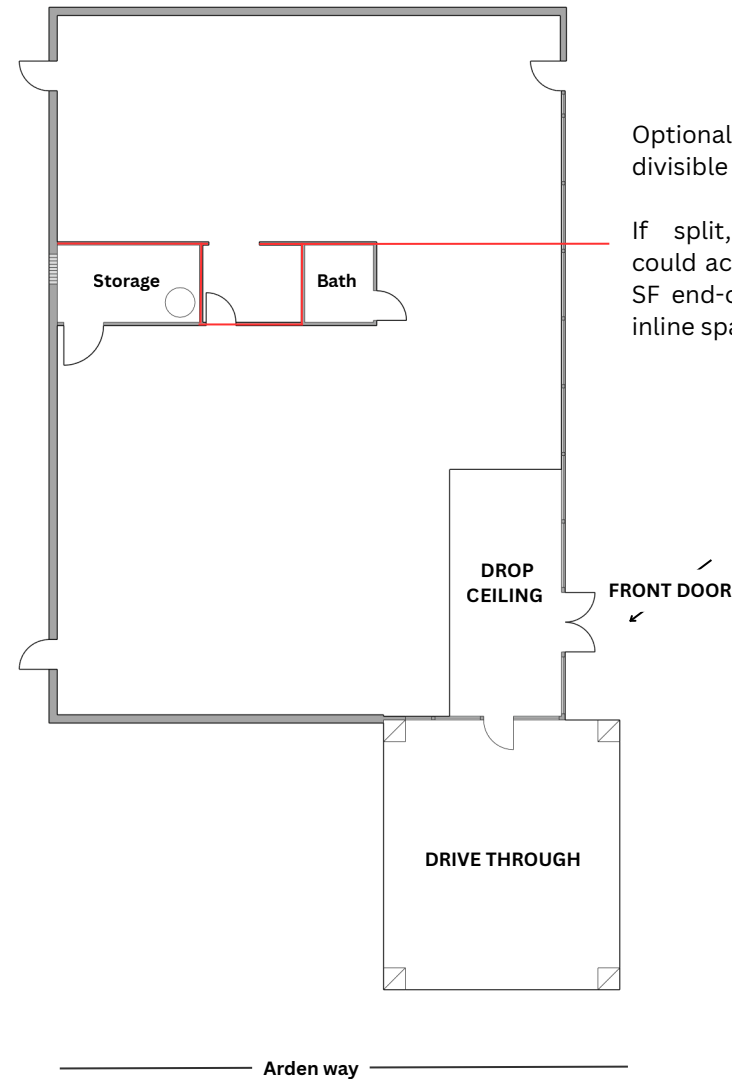
DEMOGRAPHICS	2 miles	5 miles	10 miles
POPULATION			
2025 Population	58,190	351,828	1,210,635
Median Age	41.9	38.2	38.3
Bachelors Degree or Higher	42%	30%	28%
HOUSEHOLDS			
2025 Total Households	23,430	136,256	441,834
INCOME			
Median Household Income	\$98,074	\$78,785	\$84,356
Households above \$100k	11,500	52,388	182,309

CONSUMER SPENDING	10 miles / yr
TOTAL	\$14.7B
Food & Alcohol	\$4.1B
Entertainment & Hobbies	\$2.2B
DAYTIME POPULATION	
TOTAL	19,311
Education & Health Services	5,669
Leisure & Hospitality	2,336
Financial Activities	3,432

Source: Costar 2026

SUITE HIGHLIGHTS

- Drive through style covered awning
- Fully built-out as standard retail space
- Private restroom, storage rooms, and a drop ceiling area.
- ~15' clear ceiling height
- 600 amp electrical panel. Upsized gas meter
- Lease term: 5 years
- Competitive asking rent and significantly lower NNNs than comparable properties in the area. Please inquire for details.
- NNN Lease. Please call for details



Optionally, this space may be divisible for the right user.

If split, the configuration could accommodate a $\pm 2,410$ SF end-cap and a $\pm 1,260$ SF inline space.

SUITE PHOTOS



OTHER AVAILABLE PROPERTIES

Sacramento CA Region

ANTONIA GIAOURIS

Executive Director of Leasing

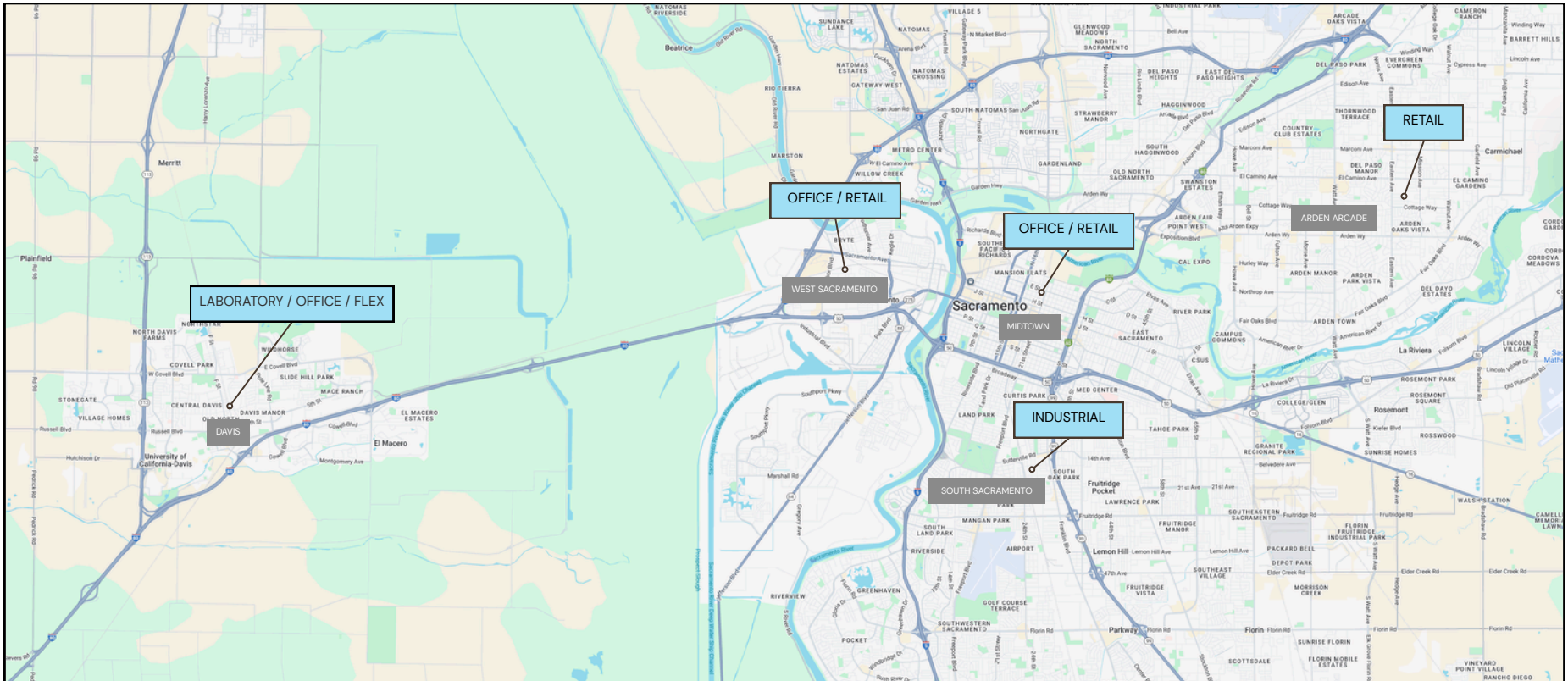
Antonia.Giaouris@Clire.com | (916) 457 - 9900 x 6

[View All Retail](#)

[View All Offices](#)

[View All Industrial](#)

[View All Laboratories](#)



[View All Available Properties](#)