

# LAB / OFFICE SPACE FOR LEASE

2121 2<sup>ND</sup> ST (SUITE C-106)

Davis, CA 95618

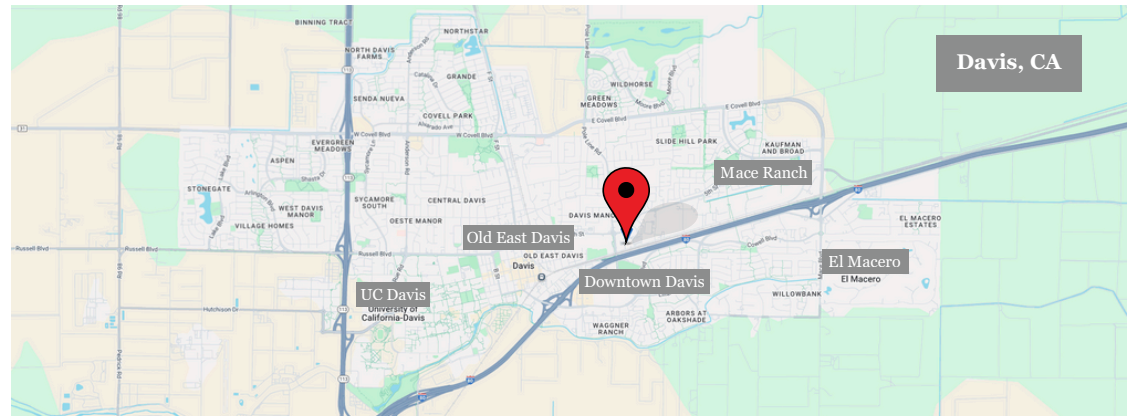
Zoned: PD 2-84

Multiple lab rooms with sinks & benches

Multiple private offices

Available now!

This space consists of multiple private offices, a large conference room, multiple lab rooms, storage areas and a kitchen.



## ANTONIA GIAOURIS

Executive Director of Leasing

Antonia.Giaouris@Clire.com | (916) 457 - 9900 x 6

± 3,191 SF  
Rentable

NNN lease  
Call for details

**clire.com**

Information herein deemed reliable but not guaranteed. References to any values are approximate. Floor Plans and Site Plans are not to scale. Lessee should conduct independent verification of all matters deemed to be material. Listed rate may not include certain utilities, building services and property expenses. All approvals, permits, and compliance with applicable codes are the responsibility of the lessee.



**FOR LEASE**

# 2121 2<sup>ND</sup> ST (SUITE C-106)

Davis, CA 95618



## SUITE HIGHLIGHTS

- Multiple lab rooms with sinks & benches
- Multiple private offices
- 2 fume hoods
- Security Cameras
- Alarm System
- Roll up door knockout
- Vinyl clad, washable ceiling tiles
- Common area restrooms
- 200 amps panel, 120/240 volts, 3 phase, 4 wire

**ANTONIA GIAOURIS**

Executive Director of Leasing

[Antonia.Giaouris@Clire.com](mailto:Antonia.Giaouris@Clire.com)

(916) 457 - 9900 x 6

**clire.com**

Information herein deemed reliable but not guaranteed. References to any values are approximate. Floor Plans and Site Plans are not to scale. Lessee should conduct independent verification of all matters deemed to be material. Listed rate may not include certain utilities, building services and property expenses. All approvals, permits, and compliance with applicable codes are the responsibility of the lessee.

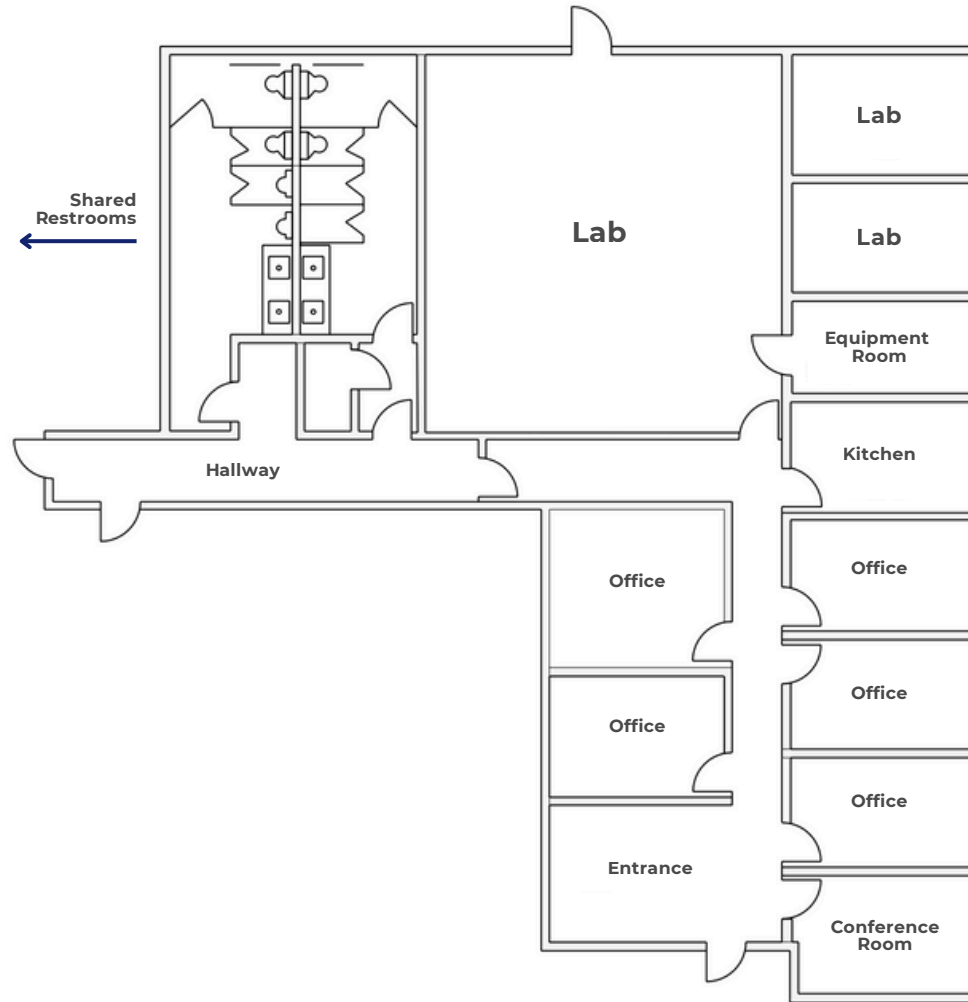


**FOR LEASE**

**2121 2<sup>ND</sup> ST (SUITE C-106)**

Davis, CA 95618

## FLOOR PLAN



**clire.com**

Information herein deemed reliable but not guaranteed. References to any values are approximate. Floor Plans and Site Plans are not to scale. Lessee should conduct independent verification of all matters deemed to be material. Listed rate may not include certain utilities, building services and property expenses. All approvals, permits, and compliance with applicable codes are the responsibility of the lessee.





**FOR LEASE**

# 2121 2<sup>ND</sup> ST (SUITE C-106)

Davis, CA 95618



Davis Commerce Park, a dynamic community designed for innovation, productivity, and growth. Perfectly positioned to meet the diverse needs of modern enterprises, our park is home to a vibrant mix of lab, office, flex, gym, cannabis, science, and research tenants. Easily accessible by car, bus, walking, and biking, Davis Commerce Park is situated near numerous bike and walking paths. In addition to its convenient location, Davis Commerce Park is surrounded by a variety of restaurants, making it easy for employers, employees, and clients to grab a quick bite, enjoy lunch, or host a meeting. This center comprises three commercial buildings and offers flexible space to accommodate both small and large businesses. Discover how Davis Commerce Park can be the catalyst for your business success!

**clire.com**

Information herein deemed reliable but not guaranteed. References to any values are approximate. Floor Plans and Site Plans are not to scale. Lessee should conduct independent verification of all matters deemed to be material. Listed rate may not include certain utilities, building services and property expenses. All approvals, permits, and compliance with applicable codes are the responsibility of the lessee.

## PROPERTY HIGHLIGHTS

- Zoned: PD - Planned Development
  - PD #2-84 Master CUP approval
- Building size: 62,369 SF
- Lot size: ± 4.37 acres
- Strong street visibility
- Desirable location
- Easy parking
- Minutes from freeway
- Reinforced concrete buildings
- Fiber optic internet access
- Natural gas
- Built in 1985

**ANTONIA GIAOURIS**

Executive Director of Leasing

[Antonia.Giaouris@Clire.com](mailto:Antonia.Giaouris@Clire.com)

(916) 457 - 9900 x 6





**FOR LEASE**

**2121 2<sup>ND</sup> ST (SUITE C-106)**

Davis, CA 95618

## PROPERTY PHOTOS



**clire.com**

Information herein deemed reliable but not guaranteed. References to any values are approximate. Floor Plans and Site Plans are not to scale. Lessee should conduct independent verification of all matters deemed to be material. Listed rate may not include certain utilities, building services and property expenses. All approvals, permits, and compliance with applicable codes are the responsibility of the lessee.





**FOR LEASE**

**2121 2<sup>ND</sup> ST (SUITE C-106)**

Davis, CA 95618

**AERIAL VIEW**



**clire.com**

Information herein deemed reliable but not guaranteed. References to any values are approximate. Floor Plans and Site Plans are not to scale. Lessee should conduct independent verification of all matters deemed to be material. Listed rate may not include certain utilities, building services and property expenses. All approvals, permits, and compliance with applicable codes are the responsibility of the lessee.



FOR LEASE

2121 2<sup>ND</sup> ST (SUITE C-106)

Davis, CA 95618

SITE PLAN



clire.com

Information herein deemed reliable but not guaranteed. References to any values are approximate. Floor Plans and Site Plans are not to scale. Lessee should conduct independent verification of all matters deemed to be material. Listed rate may not include certain utilities, building services and property expenses. All approvals, permits, and compliance with applicable codes are the responsibility of the lessee.





**FOR LEASE**

**2121 2<sup>ND</sup> ST (SUITE C-106)**

Davis, CA 95618

## LOCATION HIGHLIGHTS



1. Bank of America  
1.3 miles away
2. Wells Fargo Bank  
1.2 miles
3. Chase Bank  
1.3 miles away
4. Travis Credit Union  
1.4 miles away
5. US Bank  
1.2 miles away



1. Davis Bike Loop  
1.7 miles away
2. Putah Creek Riparian Reserve  
1.6 miles away
3. Walnut Park  
0.5 miles away
4. Brooks Road Trailhead  
3.7 miles
5. UC Davis Arboretum and Public Garden  
1.9 miles away
6. Northstar Park  
2.2 miles away
7. Central Park  
1.1 miles away
8. Yolo Bypass Wildlife Area  
2.9 miles away
9. Sandy Motley Park  
1.4 miles away
10. Slide Hill Park  
1.0 miles away



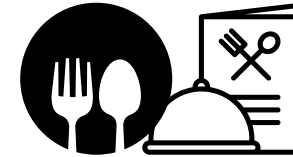
1. Hyatt House Davis  
0.3 miles away
2. Hyatt Place UC Davis  
1.5 miles away
3. University Park Inn and Suites  
1.0 miles away
4. Holiday Inn Express & Suites Davis  
0.6 miles away



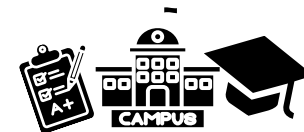
1. Oakland International Airport  
80.1 miles away
2. Sacramento International Airport  
20.6 miles away
3. San Francisco International Airport  
88.3 miles away



1. Sutter Davis Hospital  
4.1 miles away
2. UC Davis Medical Center  
2.6 miles away
3. Kaiser Permanente Davis Offices  
2.0 miles away



1. Tres Hermanas  
0.8 miles away
2. Dos Coyotes Border Case  
0.5 miles away
3. Ike's Love & Sandwiches  
0.9 miles away
4. Mr. Pickle's Sandwich shop  
0.5 miles away
5. Black Bear Diner  
1.2 miles away
6. In-N-Out Burger  
0.9 miles away
7. Raising Canes's Chicken Fingers  
1.0 miles away
8. Blaze Pizza  
0.9 miles away
9. Nick the Greek  
1.0 miles away
10. Sam's Mediterranean Cuisine  
1.2 miles away



1. UC Davis  
1.7 miles away
2. University of Southern California  
398 miles away
3. UC Berkeley  
70.8 miles away
4. Stanford University  
111 miles away
5. California Institute of Technology  
398 miles away

**clire.com**

Information herein deemed reliable but not guaranteed. References to any values are approximate. Floor Plans and Site Plans are not to scale. Lessee should conduct independent verification of all matters deemed to be material. Listed rate may not include certain utilities, building services and property expenses. All approvals, permits, and compliance with applicable codes are the responsibility of the lessee.



FOR LEASE

2121 2<sup>ND</sup> ST (SUITE C-106)  
Davis, CA 95618

DEMOGRAPHICS

	2-mile	5-mile	10-mile
2024 POPULATION	50,894	83,676	181,508
2024 HOUSEHOLDS	18,228	28,989	62,438
MEDIAN AGE	28.3	27.4	31.3
AVERAGE HH INCOME	\$118,365	\$117,101	\$113,648
MEDIAN HOME VALUE	\$780,187	\$794,465	\$618,459
DAYTIME EMPLOYEES	37,801	43,865	\$91,779

clire.com

Information herein deemed reliable but not guaranteed. References to any values are approximate. Floor Plans and Site Plans are not to scale. Lessee should conduct independent verification of all matters deemed to be material. Listed rate may not include certain utilities, building services and property expenses. All approvals, permits, and compliance with applicable codes are the responsibility of the lessee.



# OTHER AVAILABLE PROPERTIES

Sacramento CA Region

ANTONIA GIAOURIS

Executive Director of Leasing

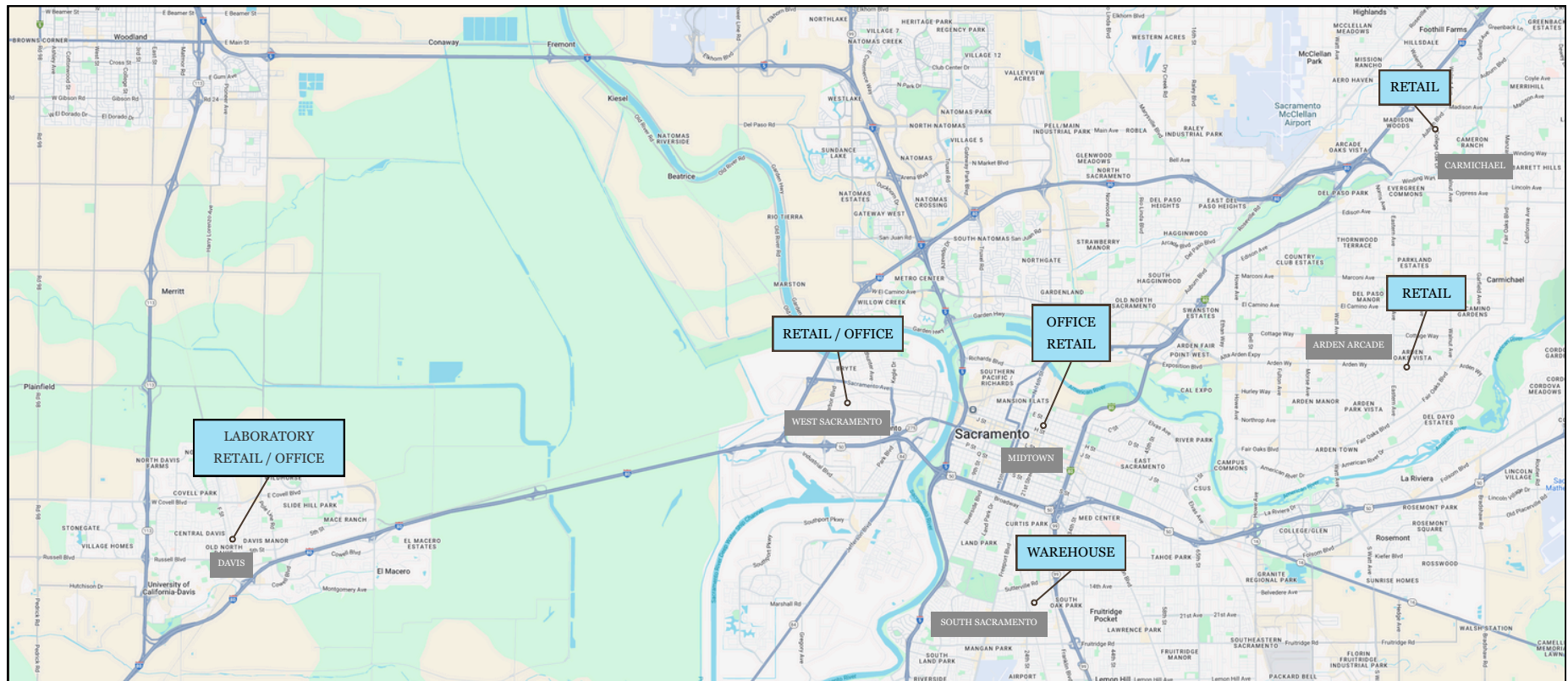
Antonia.Giaouris@Clire.com | (916) 457 - 9900 x 6

[View All Retail](#)

[View All Offices](#)

[View All Warehouses](#)

[View All Laboratories](#)



[View All Available Properties](#)

**clire.com**

Information herein deemed reliable but not guaranteed. References to any values are approximate. Floor Plans and Site Plans are not to scale. Lessee should conduct independent verification of all matters deemed to be material. Listed rate may not include certain utilities, building services and property expenses. All approvals, permits, and compliance with applicable codes are the responsibility of the lessee.







2121 2<sup>ND</sup> ST SUITE C-106  
Davis, CA 95618

## LABORATORY/ OFFICE SPACE FOR LEASE

Schedule a tour today!

Not quite what you're looking for? Give us a call —  
we may have something else that fits your needs.

**ANTONIA GIAOURIS**

Executive Director of Leasing

[Antonia.Giaouris@Clire.com](mailto:Antonia.Giaouris@Clire.com)

(916) 457 - 9900 x 6

**clire.com**

Information herein deemed reliable but not guaranteed. References to any values are approximate. Floor Plans and Site Plans are not to scale. Lessee should conduct independent verification of all matters deemed to be material. Listed rate may not include certain utilities, building services and property expenses. All approvals, permits, and compliance with applicable codes are the responsibility of the lessee.

