

INDUSTRIAL SPACE FOR LEASE

4747 24TH ST - UNIT B

Sacramento, CA 95822

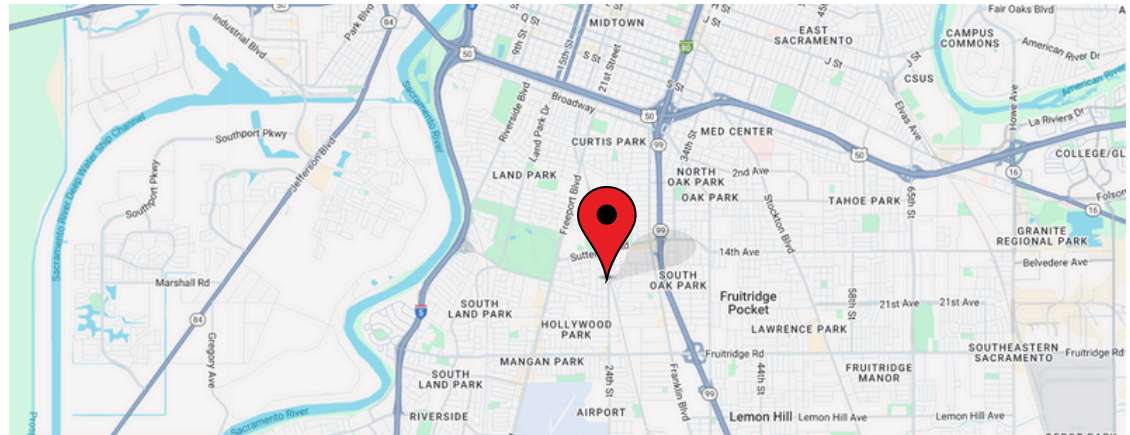
Zoned: M1 - Light Industrial

± 7,000 of yard space

± 460 additional SF of 2nd floor mezzanine storage

Common area restroom

Available now!



ANTONIA GIAOURIS

Executive Director of Leasing

Antonia.Giaouris@Clire.com | (916) 457 - 9900 x 6

± 1,700 SF
Rentable

\$1,605
+310 NNN /mo

clire.com

Information herein deemed reliable but not guaranteed. References to any values are approximate. Floor Plans and Site Plans are not to scale. Lessee should conduct independent verification of all matters deemed to be material. Listed rate may not include certain utilities, building services and property expenses. All approvals, permits, and compliance with applicable codes are the responsibility of the lessee.



FOR LEASE

4747 24TH ST - UNIT B

Sacramento, CA 95822

EXTERIOR PHOTOS



clire.com

Information herein deemed reliable but not guaranteed. References to any values are approximate. Floor Plans and Site Plans are not to scale. Lessee should conduct independent verification of all matters deemed to be material. Listed rate may not include certain utilities, building services and property expenses. All approvals, permits, and compliance with applicable codes are the responsibility of the lessee.



FOR LEASE

4747 24TH ST - UNIT B

Sacramento, CA 95822

INTERIOR PHOTOS



clire.com

Information herein deemed reliable but not guaranteed. References to any values are approximate. Floor Plans and Site Plans are not to scale. Lessee should conduct independent verification of all matters deemed to be material. Listed rate may not include certain utilities, building services and property expenses. All approvals, permits, and compliance with applicable codes are the responsibility of the lessee.



FOR LEASE

4747 24TH ST - UNIT B
Sacramento, CA 95822

PROPERTY DETAILS



This property features a multi-tenant office building in the front and industrial units in the rear.

- Ample parking available
- Built in 1989
- Building Size: 28,690 SF
- Lot Size: 1.53 AC
- Zoned: M1 - Light Industrial
- Near light rail
- Quick freeway access to 99, 50 and 80

clire.com

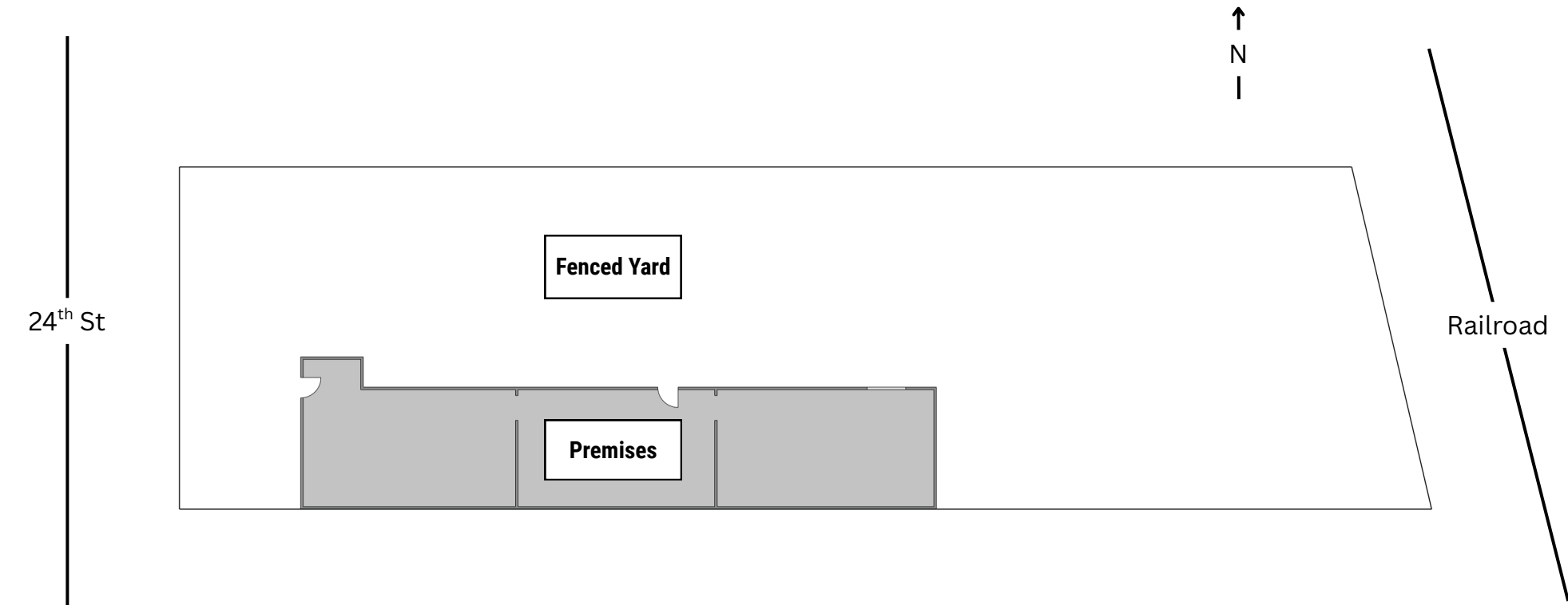
Information herein deemed reliable but not guaranteed. References to any values are approximate. Floor Plans and Site Plans are not to scale. Lessee should conduct independent verification of all matters deemed to be material. Listed rate may not include certain utilities, building services and property expenses. All approvals, permits, and compliance with applicable codes are the responsibility of the lessee.



FOR LEASE

4747 24TH ST - UNIT B
Sacramento, CA 95822

FLOOR PLAN



clire.com

Information herein deemed reliable but not guaranteed. References to any values are approximate. Floor Plans and Site Plans are not to scale. Lessee should conduct independent verification of all matters deemed to be material. Listed rate may not include certain utilities, building services and property expenses. All approvals, permits, and compliance with applicable codes are the responsibility of the lessee.

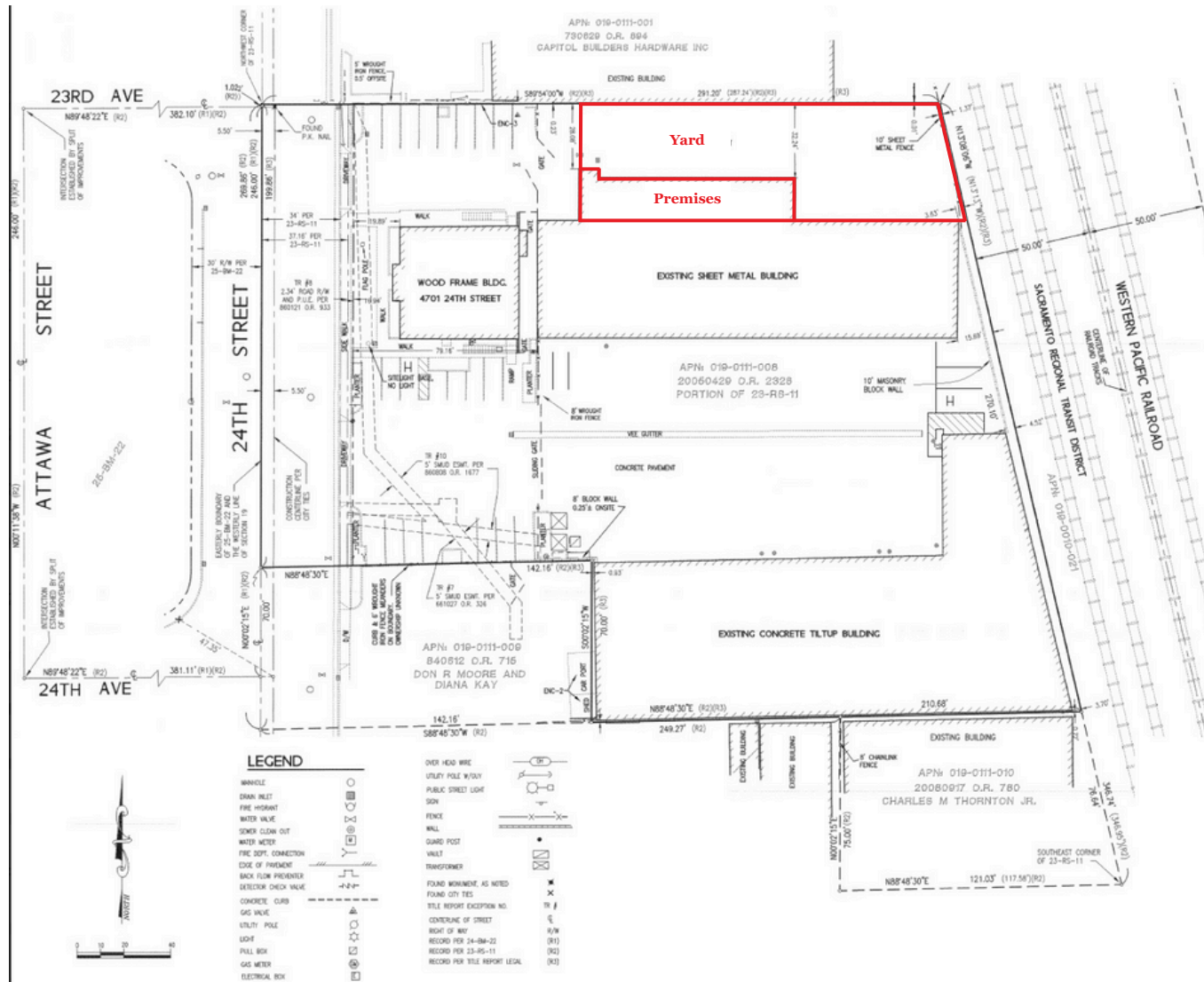


FOR LEASE

4747 24TH ST - UNIT B

Sacramento, CA 95822

SITE PLAN



clire.com

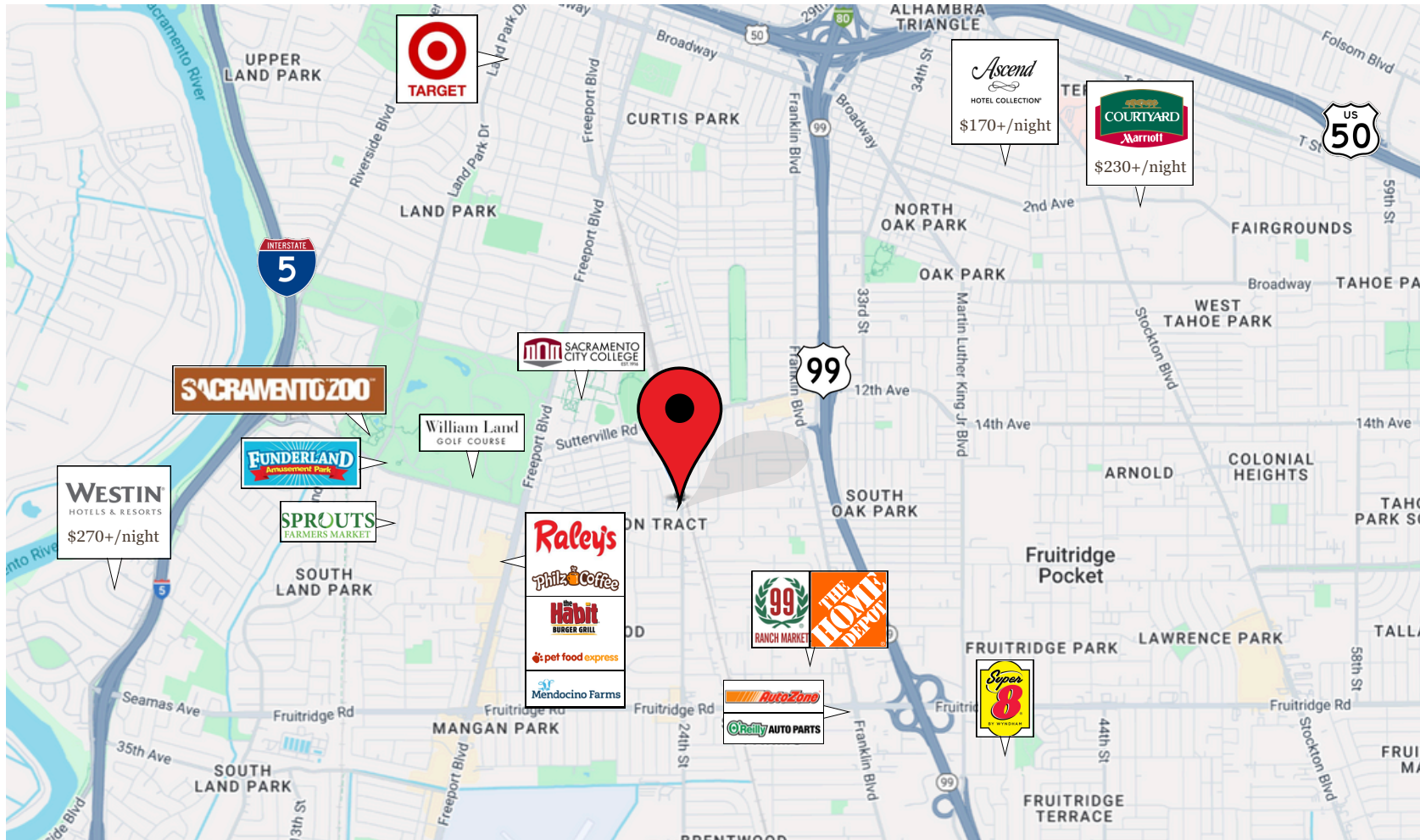
Information herein deemed reliable but not guaranteed. References to any values are approximate. Floor Plans and Site Plans are not to scale. Lessee should conduct independent verification of all matters deemed to be material. Listed rate may not include certain utilities, building services and property expenses. All approvals, permits, and compliance with applicable codes are the responsibility of the lessee.



FOR LEASE

4747 24TH ST - UNIT B
Sacramento, CA 95822

LOCATION HIGHLIGHTS



clire.com

Information herein deemed reliable but not guaranteed. References to any values are approximate. Floor Plans and Site Plans are not to scale. Lessee should conduct independent verification of all matters deemed to be material. Listed rate may not include certain utilities, building services and property expenses. All approvals, permits, and compliance with applicable codes are the responsibility of the lessee.





4747 24TH ST - UNIT B
SACRAMENTO, CA 95822

INDUSTRIAL SPACE
AVAILABLE FOR LEASE

Schedule a tour today!

ANTONIA GIAOURIS

Executive Director of Leasing

Antonia.Giaouris@Clire.com

(916) 457 - 9900 x 6

clire.com

Information herein deemed reliable but not guaranteed. References to any values are approximate. Floor Plans and Site Plans are not to scale. Lessee should conduct independent verification of all matters deemed to be material. Listed rate may not include certain utilities, building services and property expenses. All approvals, permits, and compliance with applicable codes are the responsibility of the lessee.

