

RETAIL / OFFICE SPACE FOR LEASE

1250 HARBOR BLVD - STE. 400

West Sacramento, CA 95691

Zoned: BP - Business Park

Easy Access to FWY 5, 50, 80 & 99

Strong Street Visibility

Available now!

This business park is located on the major intersection of Beacon and Harbor Boulevard. It is surrounded by a mix of well-established neighborhoods, businesses, and industrial areas. We are proud to have had many successful tenants who have been around for a long time. This location is near most major freeways, in a highly desirable and well-maintained area.

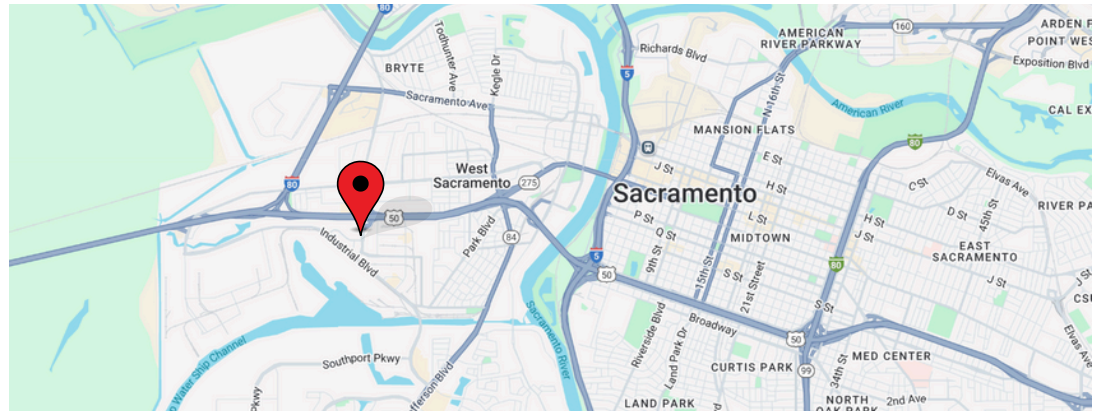
ANTONIA GIAOURIS

Executive Director of Leasing

Antonia.Giaouris@Clire.com | (916) 457-9900 x 6

clire.com

Information herein deemed reliable but not guaranteed. References to any values are approximate. Floor Plans and Site Plans are not to scale. Lessee should conduct independent verification of all matters deemed to be material. Listed rate may not include certain utilities, building services and property expenses. All approvals, permits, and compliance with applicable codes are the responsibility of the lessee.



± 674 SF
Rentable

\$1,078 / mo
Modified Gross



FOR LEASE

1250 HARBOR BLVD. - STE. 400

West Sacramento, CA 95691



Located in the thriving community of West Sacramento, CA, Harbor Business Park stands as a testament to the region's commitment to economic growth and business-friendly initiatives. Nestled strategically near major transportation routes, the park offers unparalleled access to the Sacramento metropolitan area. This property is perfect for any growing business!

PROPERTY HIGHLIGHTS

- Lot Size: 2.12 Acres
- Strong street visibility
- Desirable location
- Common area restrooms
- Lots of parking
- Easy access to FWY 5, 50, 80 & 99

ANTONIA GIAOURIS

Executive Director of Leasing

Antonia.Giaouris@Clire.com

(916) 457 - 9900 x 6

clire.com

Information herein deemed reliable but not guaranteed. References to any values are approximate. Floor Plans and Site Plans are not to scale. Lessee should conduct independent verification of all matters deemed to be material. Listed rate may not include certain utilities, building services and property expenses. All approvals, permits, and compliance with applicable codes are the responsibility of the lessee.

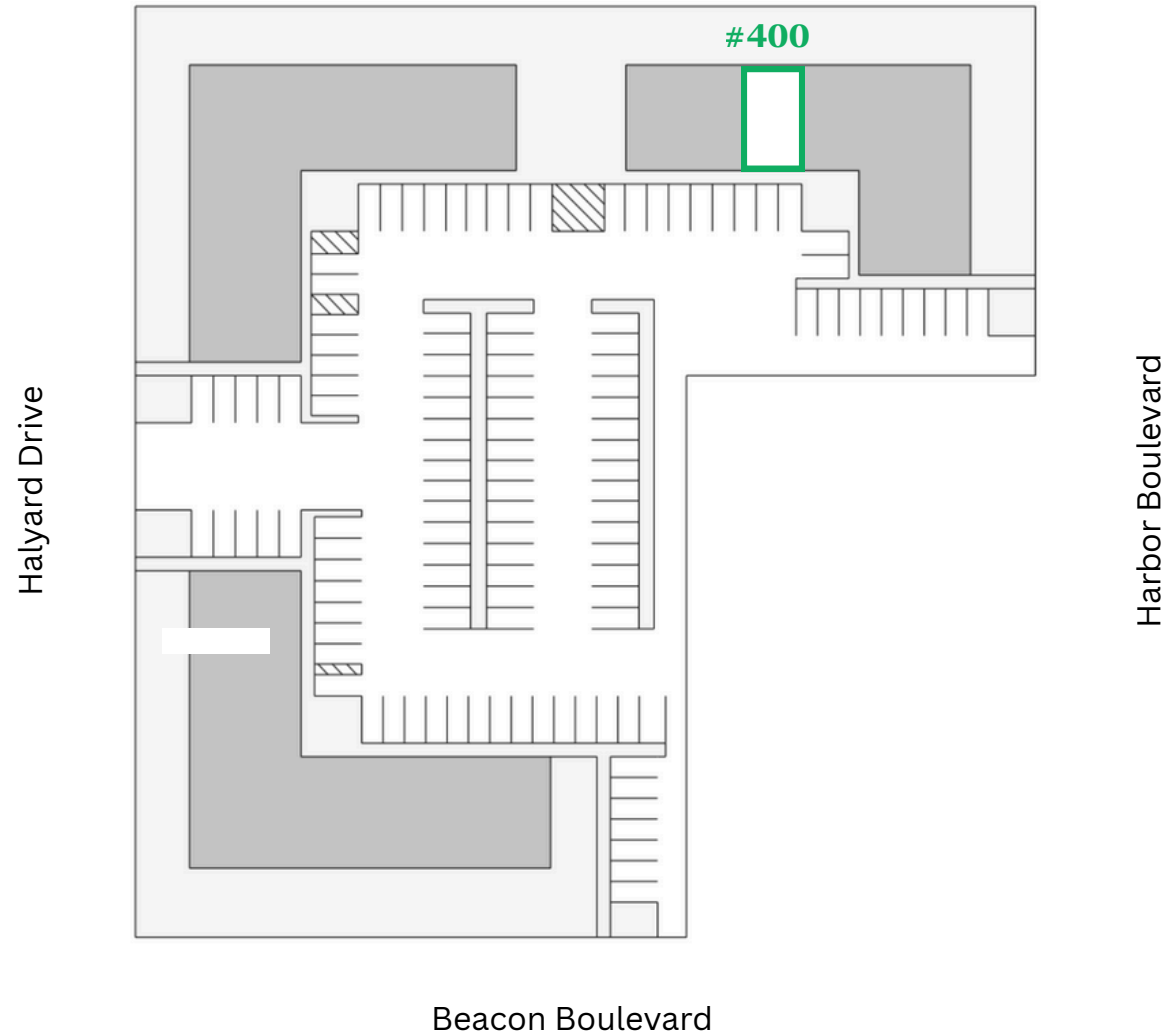


FOR LEASE

1250 HARBOR BLVD. - STE. 400

West Sacramento, CA 95691

SITE PLAN



clire.com

Information herein deemed reliable but not guaranteed. References to any values are approximate. Floor Plans and Site Plans are not to scale. Lessee should conduct independent verification of all matters deemed to be material. Listed rate may not include certain utilities, building services and property expenses. All approvals, permits, and compliance with applicable codes are the responsibility of the lessee.



FOR LEASE

1250 HARBOR BLVD. - STE. 400

West Sacramento, CA 95691

INTERIOR PHOTOS



This suite consists of a large entry area with an office in the back. There are floor to ceiling windows in both the front and back of the unit, giving the space lots of natural light!



clire.com

Information herein deemed reliable but not guaranteed. References to any values are approximate. Floor Plans and Site Plans are not to scale. Lessee should conduct independent verification of all matters deemed to be material. Listed rate may not include certain utilities, building services and property expenses. All approvals, permits, and compliance with applicable codes are the responsibility of the lessee.

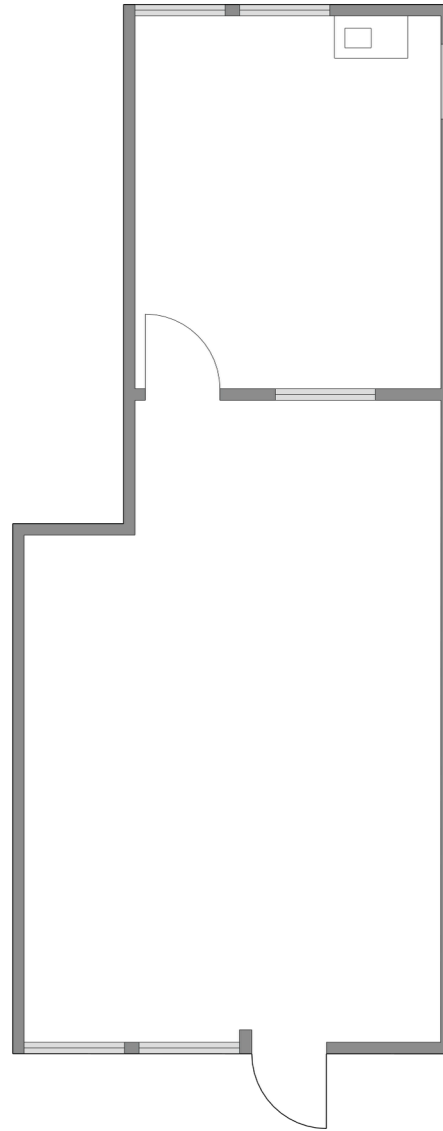


FOR LEASE

1250 HARBOR BLVD. - STE. 400

West Sacramento, CA 95691

FLOOR PLAN



Harbor Blvd.

clire.com

Information herein deemed reliable but not guaranteed. References to any values are approximate. Floor Plans and Site Plans are not to scale. Lessee should conduct independent verification of all matters deemed to be material. Listed rate may not include certain utilities, building services and property expenses. All approvals, permits, and compliance with applicable codes are the responsibility of the lessee.

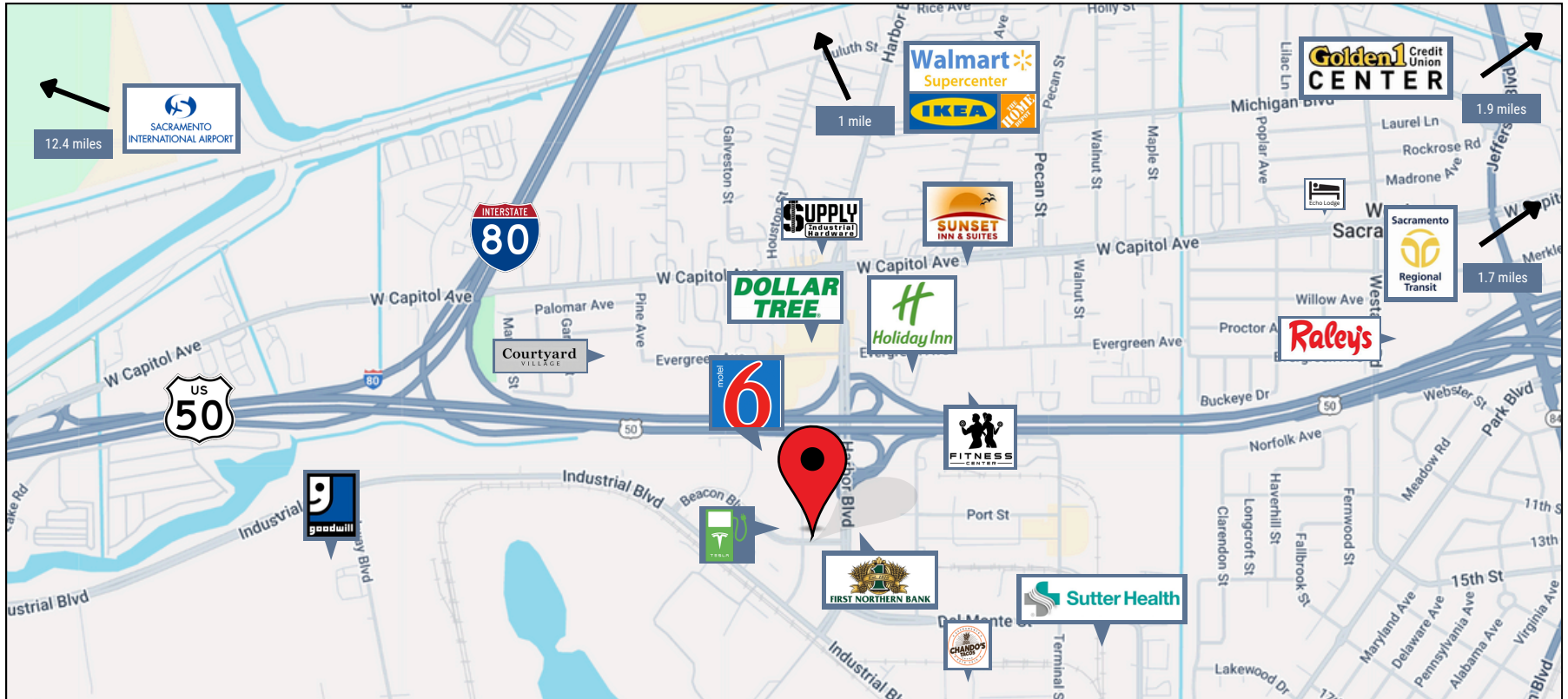


FOR LEASE

1250 HARBOR BLVD. - STE. 400

West Sacramento, CA 95691

LOCATION HIGHLIGHTS



- Capital City Fwy: 1.5 miles away
- HWY 5: 0.7 miles away
- 17 Hotels and Motels within 3 miles

clire.com

Information herein deemed reliable but not guaranteed. References to any values are approximate. Floor Plans and Site Plans are not to scale. Lessee should conduct independent verification of all matters deemed to be material. Listed rate may not include certain utilities, building services and property expenses. All approvals, permits, and compliance with applicable codes are the responsibility of the lessee.



OTHER AVAILABLE PROPERTIES

Sacramento CA Region

ANTONIA GIAOURIS

Executive Director of Leasing

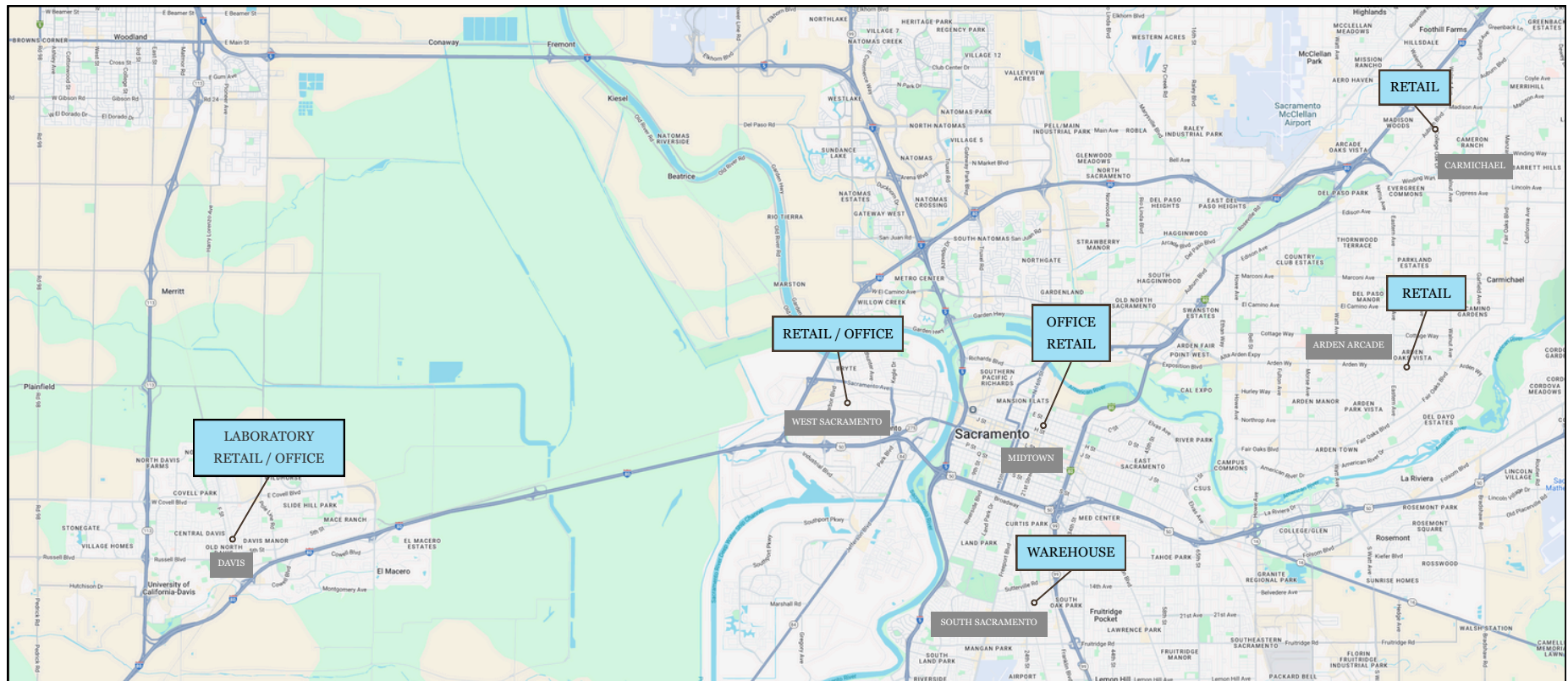
Antonia.Giaouris@Clire.com | (916) 457 - 9900 x 6

[View All Retail](#)

[View All Offices](#)

[View All Warehouses](#)

[View All Laboratories](#)



[View All Available Properties](#)

clire.com

Information herein deemed reliable but not guaranteed. References to any values are approximate. Floor Plans and Site Plans are not to scale. Lessee should conduct independent verification of all matters deemed to be material. Listed rate may not include certain utilities, building services and property expenses. All approvals, permits, and compliance with applicable codes are the responsibility of the lessee.





1250 HARBOR BLVD
SUITE #400

West Sacramento, CA 95691

RETAIL / OFFICE SPACE
AVAILABLE FOR LEASE

Schedule a tour today!

ANTONIA GIAOURIS

Executive Director of Leasing

Antonia.Giaouris@Clire.com

(916) 457 - 9900 x 6

clire.com

Information herein deemed reliable but not guaranteed. References to any values are approximate. Floor Plans and Site Plans are not to scale. Lessee should conduct independent verification of all matters deemed to be material. Listed rate may not include certain utilities, building services and property expenses. All approvals, permits, and compliance with applicable codes are the responsibility of the lessee.

