

INDUSTRIAL SPACE FOR LEASE

4370 24TH ST - UNIT C

Sacramento, CA 95822

Zoned: C4 - Heavy Commercial

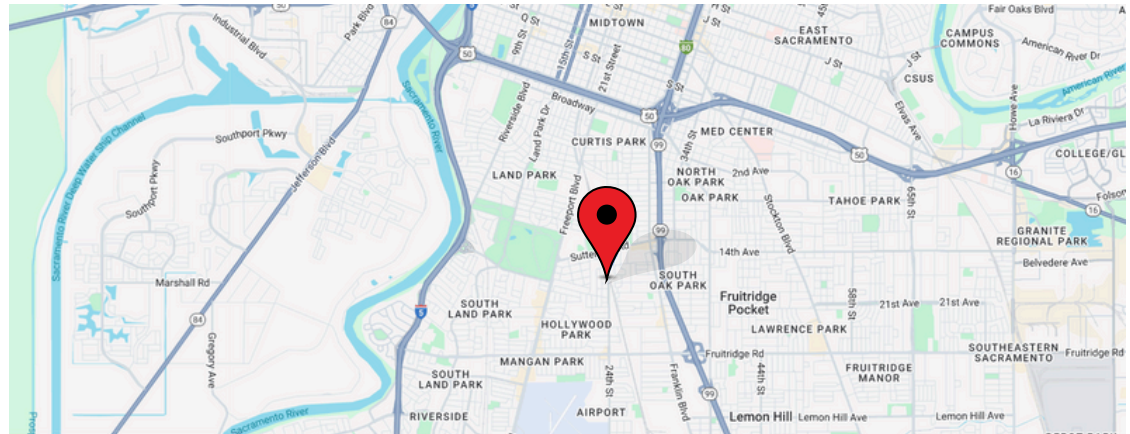
One 12' x 12' roll up door

Sprinklered

One private single occupant restroom

Electric: 150 amp, 208Y/120 VAC, 3 phase, 4 wire

Available now



ANTONIA GIAOURIS

Executive Director of Leasing

Antonia.Giaouris@Clire.com | (916) 457-9900 x 6

clire.com

Information herein deemed reliable but not guaranteed. References to any values are approximate. Floor Plans and Site Plans are not to scale. Lessee should conduct independent verification of all matters deemed to be material. Listed rate may not include certain utilities, building services and property expenses. All approvals, permits, and compliance with applicable codes are the responsibility of the lessee.

± 2,250 SF
Rentable

\$2,093 /mo
+ \$492 NNN



FOR LEASE

4370 24TH ST - UNIT C

Sacramento, CA 95822

EXTERIOR PHOTOS



clire.com

Information herein deemed reliable but not guaranteed. References to any values are approximate. Floor Plans and Site Plans are not to scale. Lessee should conduct independent verification of all matters deemed to be material. Listed rate may not include certain utilities, building services and property expenses. All approvals, permits, and compliance with applicable codes are the responsibility of the lessee.



FOR LEASE

4370 24TH ST - UNIT C

Sacramento, CA 95822

INTERIOR PHOTOS



clire.com

Information herein deemed reliable but not guaranteed. References to any values are approximate. Floor Plans and Site Plans are not to scale. Lessee should conduct independent verification of all matters deemed to be material. Listed rate may not include certain utilities, building services and property expenses. All approvals, permits, and compliance with applicable codes are the responsibility of the lessee.

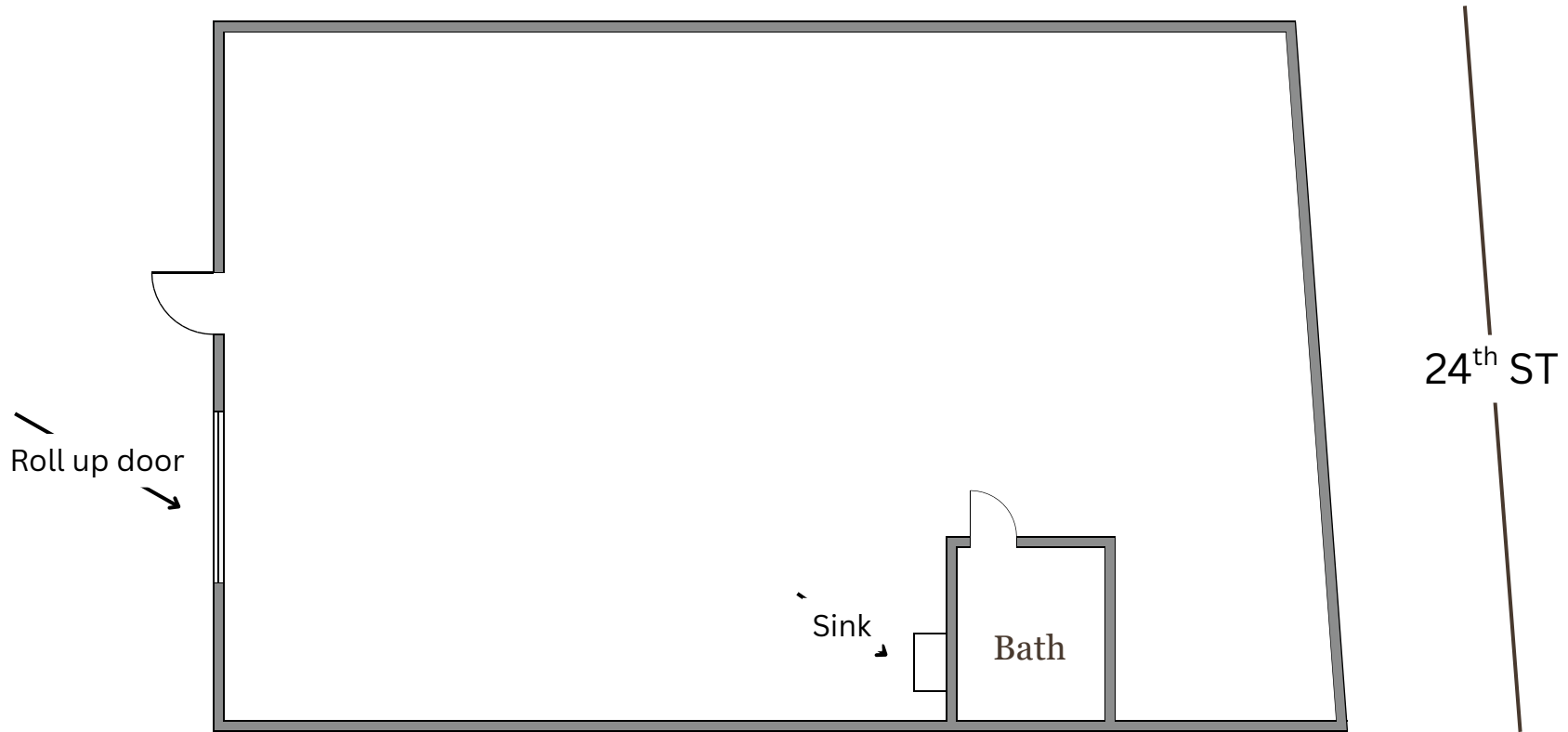


FOR LEASE

4370 24TH ST - UNIT C

Sacramento, CA 95822

FLOOR PLAN



clire.com

Information herein deemed reliable but not guaranteed. References to any values are approximate. Floor Plans and Site Plans are not to scale. Lessee should conduct independent verification of all matters deemed to be material. Listed rate may not include certain utilities, building services and property expenses. All approvals, permits, and compliance with applicable codes are the responsibility of the lessee.

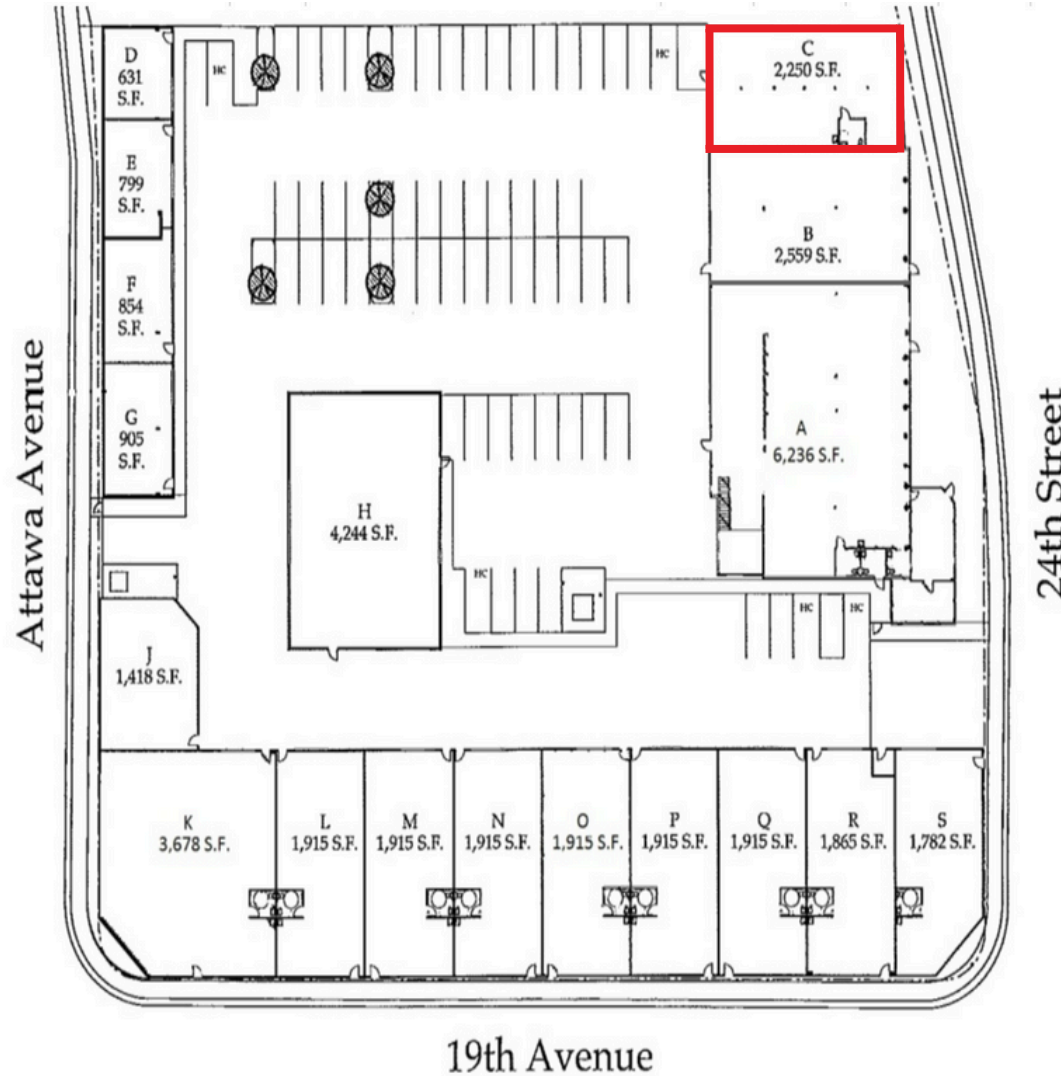


FOR LEASE

4370 24TH ST - UNIT C

Sacramento, CA 95822

SITE PLAN



clire.com

Information herein deemed reliable but not guaranteed. References to any values are approximate. Floor Plans and Site Plans are not to scale. Lessee should conduct independent verification of all matters deemed to be material. Listed rate may not include certain utilities, building services and property expenses. All approvals, permits, and compliance with applicable codes are the responsibility of the lessee.



FOR LEASE

4370 24TH ST - UNIT C

Sacramento, CA 95822



PROPERTY DETAILS

- Construction: Metal
- Lot Size: 1.81 AC
- Zoned: C4 - Heavy Commercial
- Near light rail
- Quick freeway access to 99, 50 and 80
- Lease term: 5 years
- Rent total: \$2,585
 - Base: \$2,093 (\$0.93/sf)
 - NNN: \$492

ANTONIA GIAOURIS

Executive Director of Leasing

Antonia.Giaouris@Clire.com

(916) 457 - 9900 x 6

clire.com

Information herein deemed reliable but not guaranteed. References to any values are approximate. Floor Plans and Site Plans are not to scale. Lessee should conduct independent verification of all matters deemed to be material. Listed rate may not include certain utilities, building services and property expenses. All approvals, permits, and compliance with applicable codes are the responsibility of the lessee.

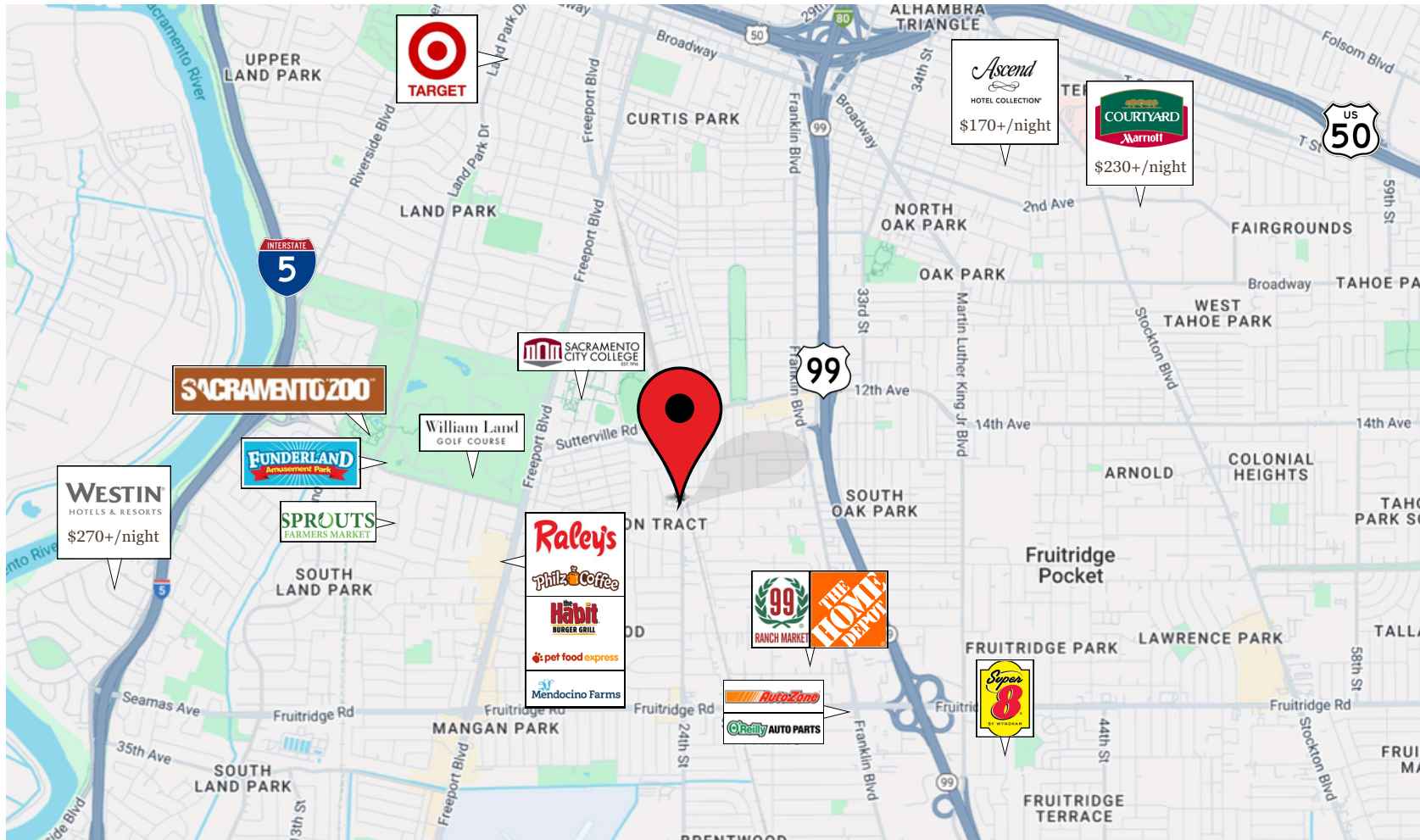


FOR LEASE

4370 24TH ST - UNIT C

Sacramento, CA 95822

LOCATION HIGHLIGHTS



clire.com

Information herein deemed reliable but not guaranteed. References to any values are approximate. Floor Plans and Site Plans are not to scale. Lessee should conduct independent verification of all matters deemed to be material. Listed rate may not include certain utilities, building services and property expenses. All approvals, permits, and compliance with applicable codes are the responsibility of the lessee.



4370 24TH ST - UNIT C

SACRAMENTO, CA 95822



INDUSTRIAL SPACE

AVAILABLE FOR LEASE

Schedule a tour today!

ANTONIA GIAOURIS

Executive Director of Leasing

Antonia.Giaouris@Clire.com

(916) 457 - 9900 x 6

clire.com

Information herein deemed reliable but not guaranteed. References to any values are approximate. Floor Plans and Site Plans are not to scale. Lessee should conduct independent verification of all matters deemed to be material. Listed rate may not include certain utilities, building services and property expenses. All approvals, permits, and compliance with applicable codes are the responsibility of the lessee.

