

# ±2,400 SF WAREHOUSE / OFFICE

3801 W Pacific Ave. Unit A, Sacramento CA

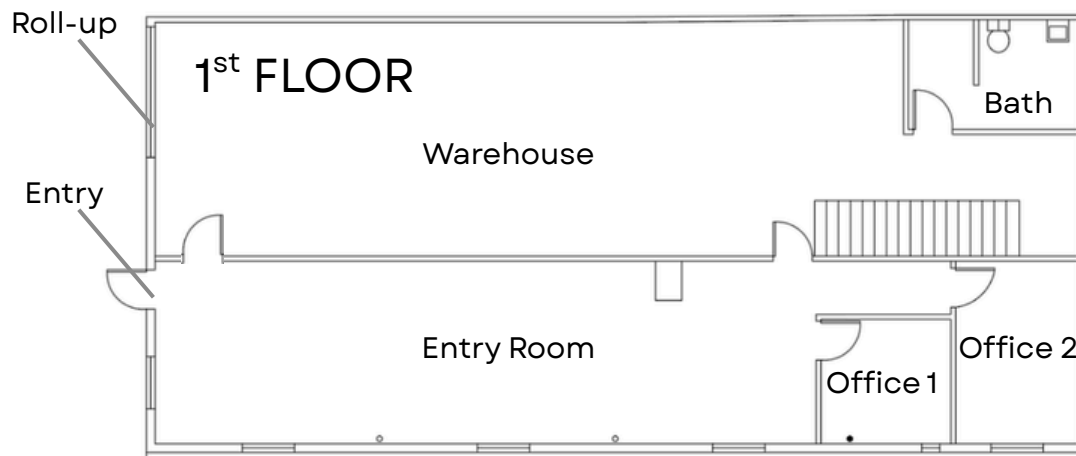
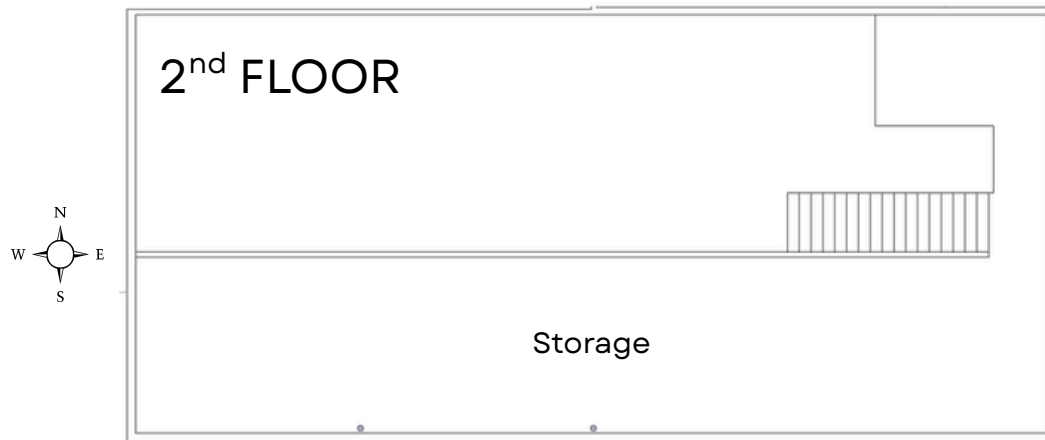
Available For Lease

## ANTONIA GIAOURIS

Executive Director of Leasing

Antonia.Giaouris@Clire.com | (916) 457 - 9900 x 6



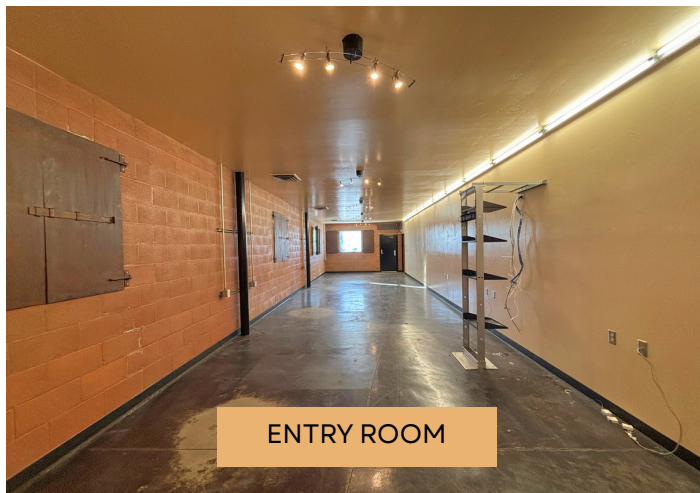


[VIEW VIDEO TOUR](#)

[VIEW LISTING](#)

### SUITE HIGHLIGHTS

- ± 994 SF of Office
- ±1,406 SF of Warehouse
- Large bonus 2nd floor storage space
- 2 private offices. 1 private single occupant restroom
- 10' x 10' roll-up door
- Warehouse 18' clear ceiling height
- Central heating and cooling system
- Electrical: 100-Amp, 240V, 3-Phase Panel; Lessee to verify service capacity
- Pre-installed security cameras
- Heavy duty steel covered security windows
- Zoned: C-4-R: Heavy Commercial
- Rent Total: \$3,320
  - Base: \$2,640 (\$1.10/SF)
  - NNN: \$680 (\$0.26/SF)



ENTRY ROOM



WAREHOUSE



OFFICE #1



2nd FLOOR



DEMOGRAPHICS	2 miles	5 miles	10 miles
<b>POPULATION</b>			
2025 Population	75,027	411,617	1,002,667
Median Age	39	38	38
Bachelors Degree or Higher	34%	32%	30%
<b>HOUSEHOLDS</b>			
2025 Total Households	29,304	156,885	359,580
2030 Household Projection	29,803	160,024	365,370
<b>INCOME</b>			
Median Household Income	\$84,693	\$82,153	\$86,848
Households above \$100k	12,536	64,270	154,545

CONSUMER SPENDING	10 miles / yr
<b>TOTAL</b>	
	\$12,143,232,721
Auto Maintenance & Repair	\$376,420,155
Food & Alcohol	\$3,342,621,238
Medical Services	\$329,827,538
<b>DAYTIME POPULATION</b>	
<b>10 miles</b>	
<b>TOTAL</b>	
	442,247
Professional & Business Services	58,528
Goods-Producing Industries	43,247
Trade Transportation & Utilities	59,754

Source: Costar 2026

# OTHER AVAILABLE PROPERTIES

Sacramento CA Region

**ANTONIA GIAOURIS**

Executive Director of Leasing

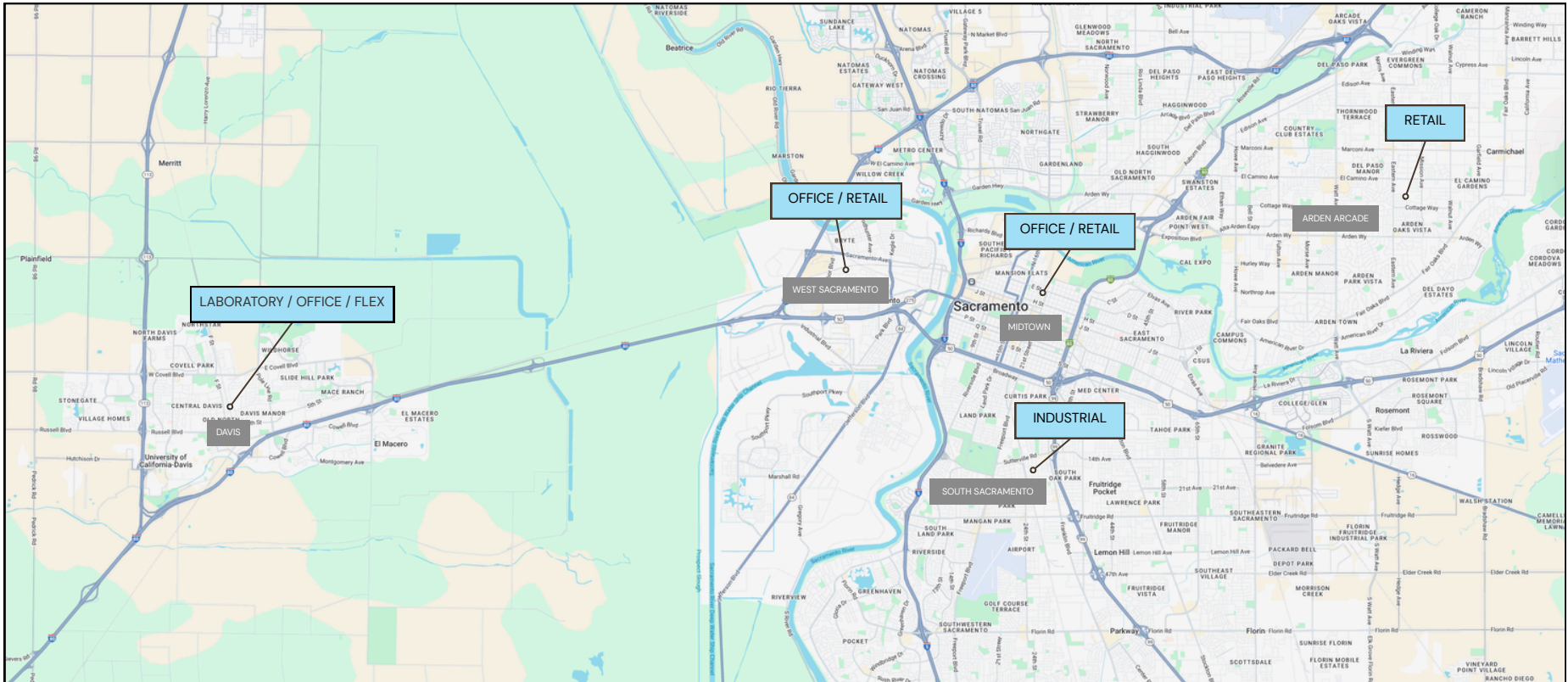
Antonia.Giaouris@Clire.com | (916) 457 - 9900 x 6

[View All Retail](#)

[View All Offices](#)

[View All Industrial](#)

[View All Laboratories](#)



[View All Available Properties](#)